

**FOR NO VISIBLE
FLAME THERMAL
DESTRUCTION**

FOR SOUR AND SWEET SYSTEMS

Fav Systems has developed the Fav Systems WG-TDU. This unit is a vertically fired, no visible flame, ceramic lined combustion chamber with a multi-tipped burner arrangement. This unique burner design and configuration produces an efficient and very quiet burning combustion flame. We can achieve these features by utilizing a ceramic coated burner, velocity breaker and combustion zone stabilizer combined with precisely sized air intake throats to supply the right ratio of combustion air to each individual burner. These systems also have a very good turn down ratio for fluctuating flow conditions.

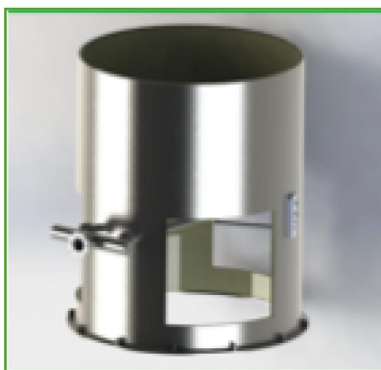
To ensure a stable and dependable source of ignition for the main burners, we equip the unit with a Fav Systems Burner Pilot c/w alumina ceramic nozzle. These pilots are energy efficient and burn very stable in high wind and turbulent conditions. The alumina ceramic pilot nozzle is resistant to heat up to 3,300° Fahrenheit and is designed for high levels of stability.

This Thermal Incinerators can be used to many applications, because are very dependable and no external flame.

Some applications for our Thermal Incinerators are:
Well Sites, Trucking Terminals, Production Sites, Vapour Recovery, Land Fills and more...



STATIONARY / WELL TESTING



Fav SYSTEMS Burner Pilot c/w Alumina Ceramic Nozzle



Ceramic Fiber Blanket Installation



Many Sizes Availables